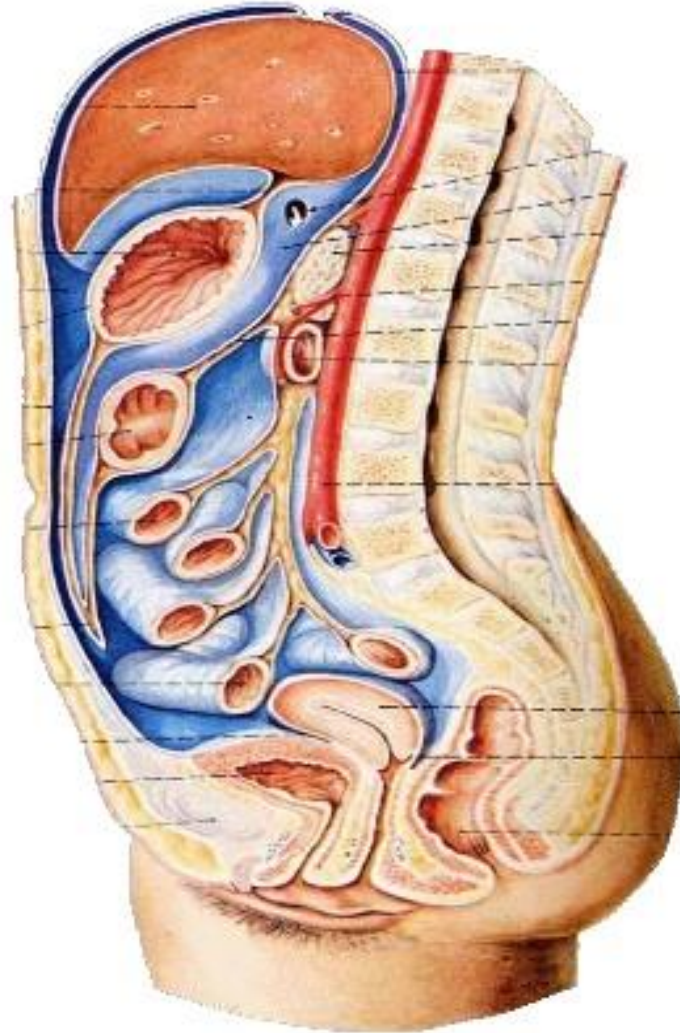


# The Peritoneum

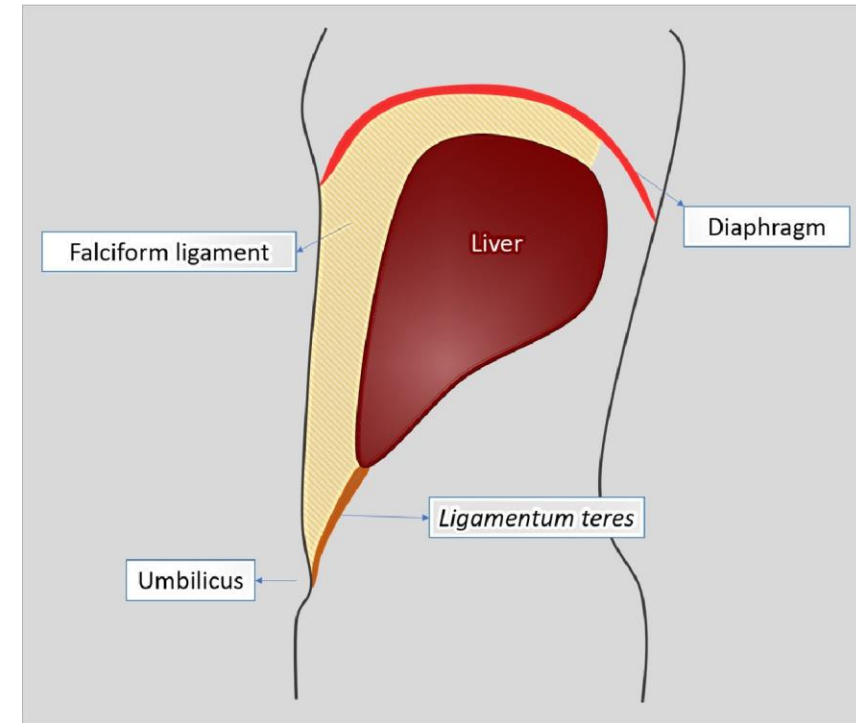
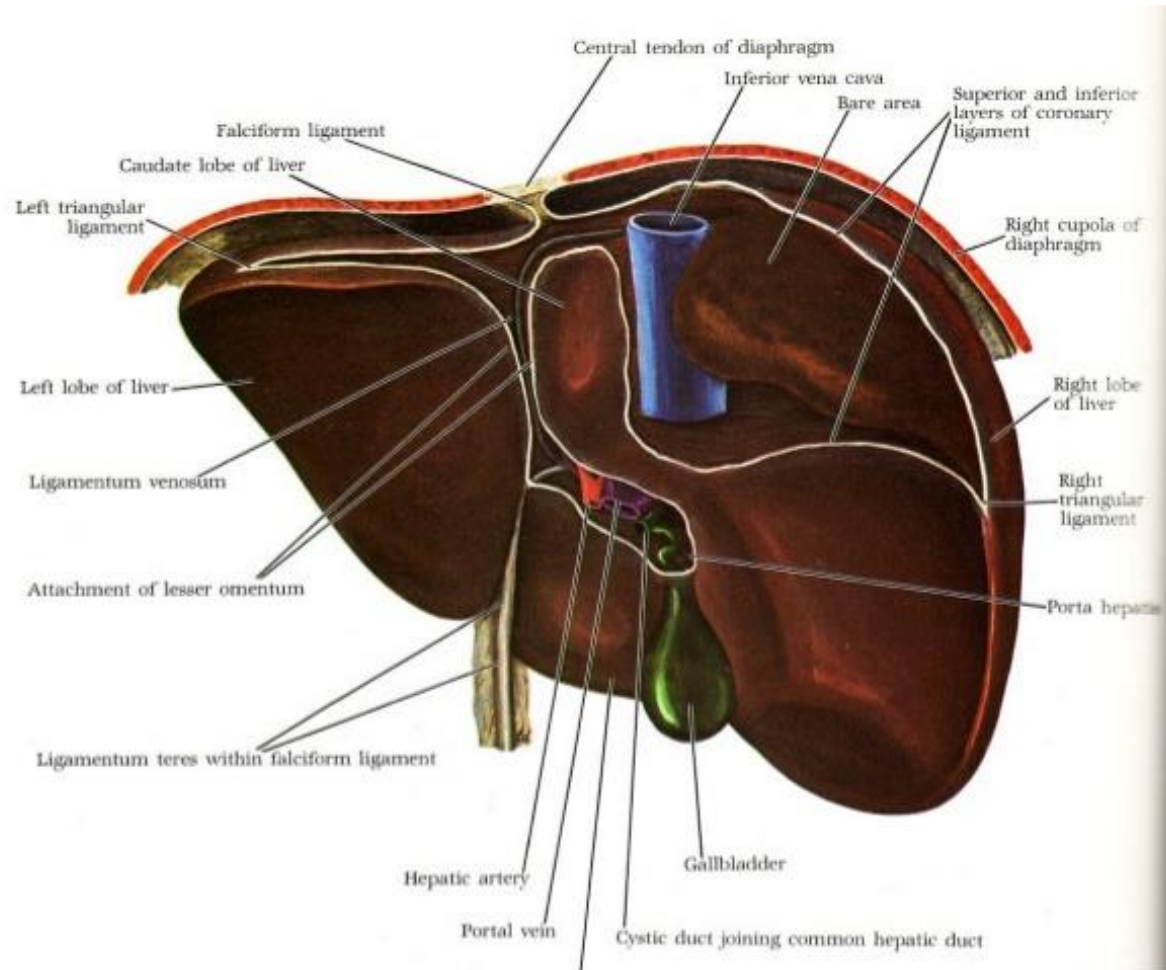
## (lecture 2)



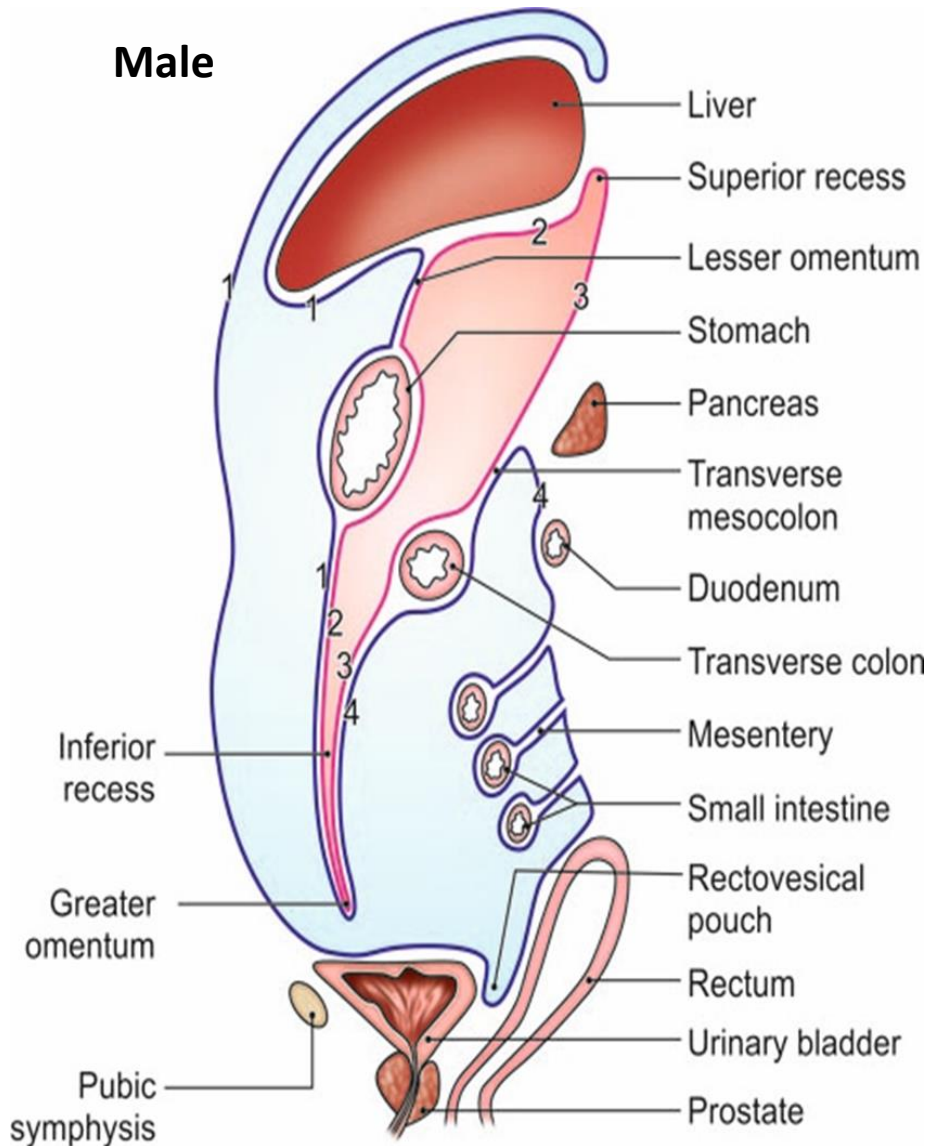
<https://www.slideshare.net/MehulTandel/peritoneum-dr-mehul-tandel>

Presented by:  
Dr. Archana Rani  
Professor  
Department of Anatomy  
KGMU, UP, Lucknow

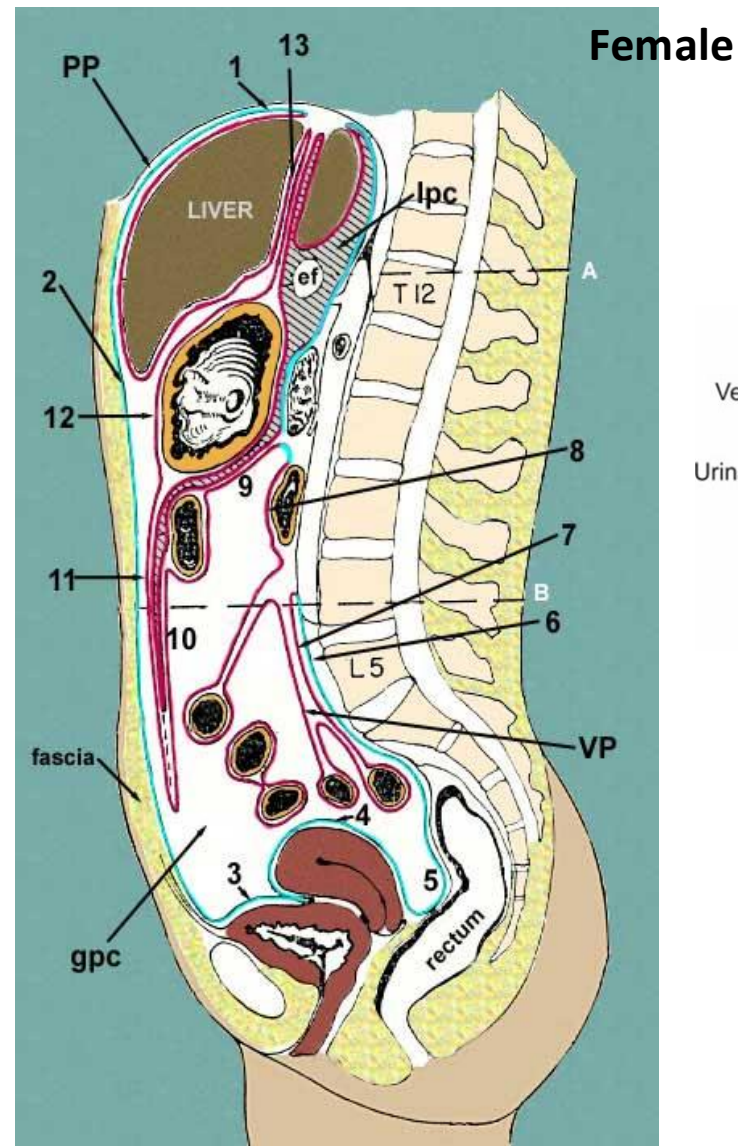
# Reflection of Peritoneum



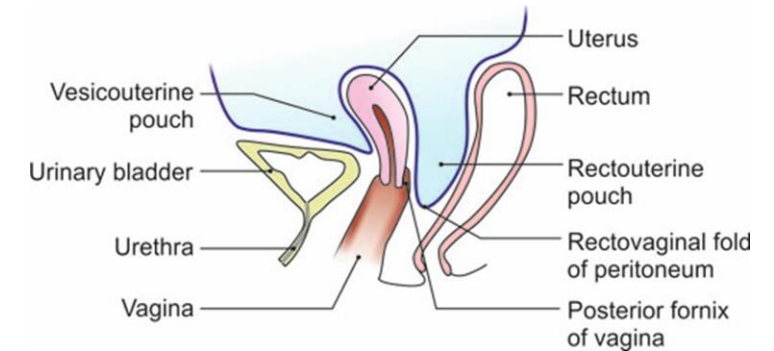
# Sagittal section through the abdomen to show the reflections of peritoneum



Human Anatomy. BD Chaurasia, 8th ed, Vol. 2, 2020



<https://www.wesnorman.com/peritoneum.htm>

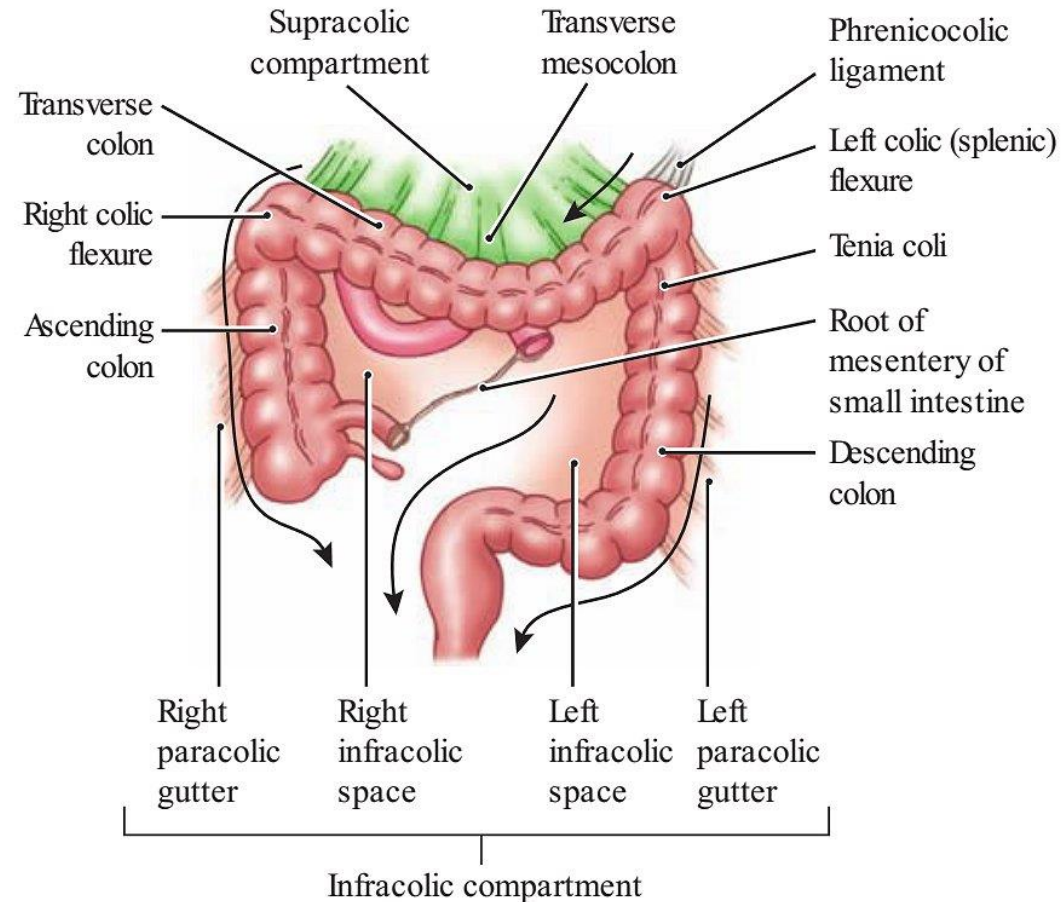


Human Anatomy. BD Chaurasia, 8th ed, Vol. 2, 2020

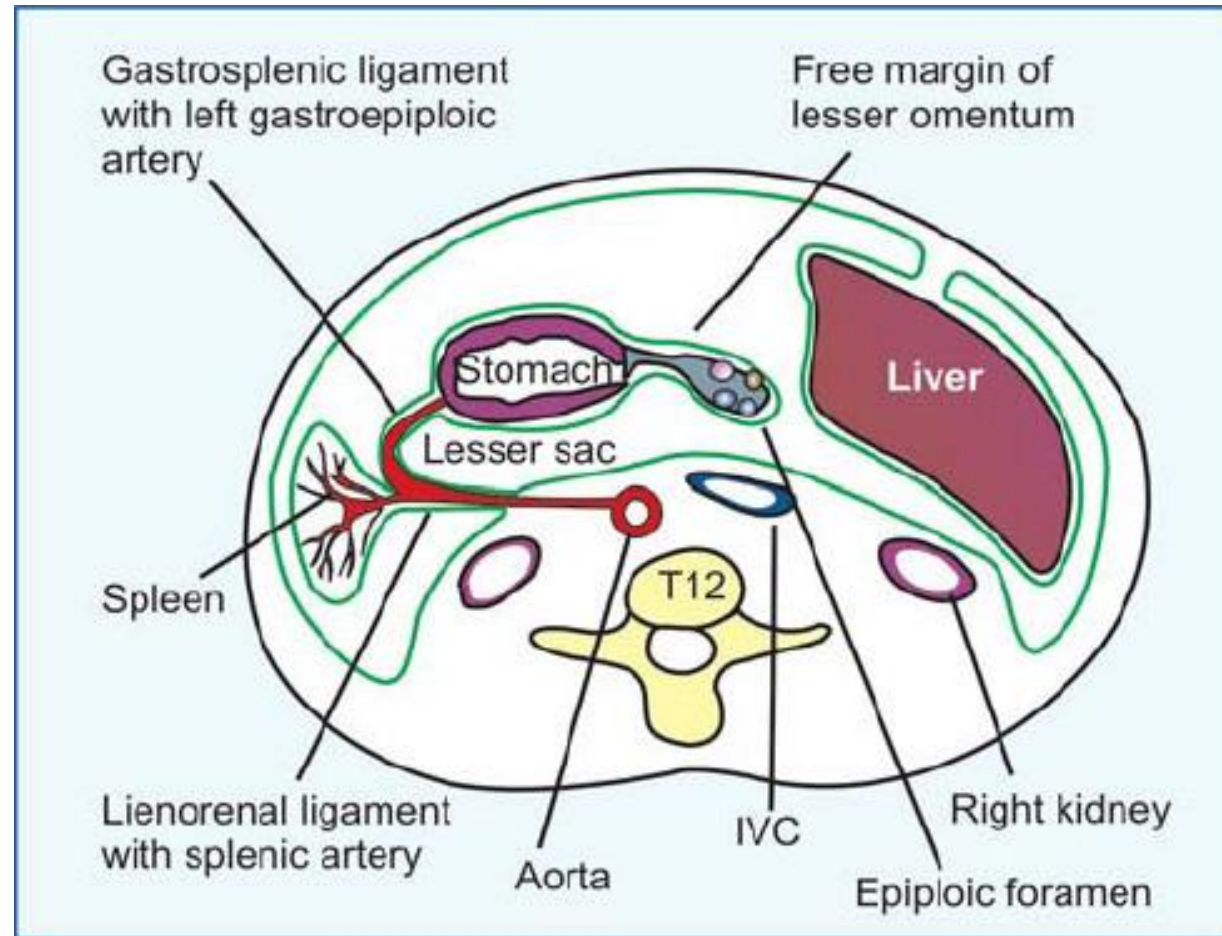
Disclaimer: Presentation is for educational purposes only and not for commercial activity



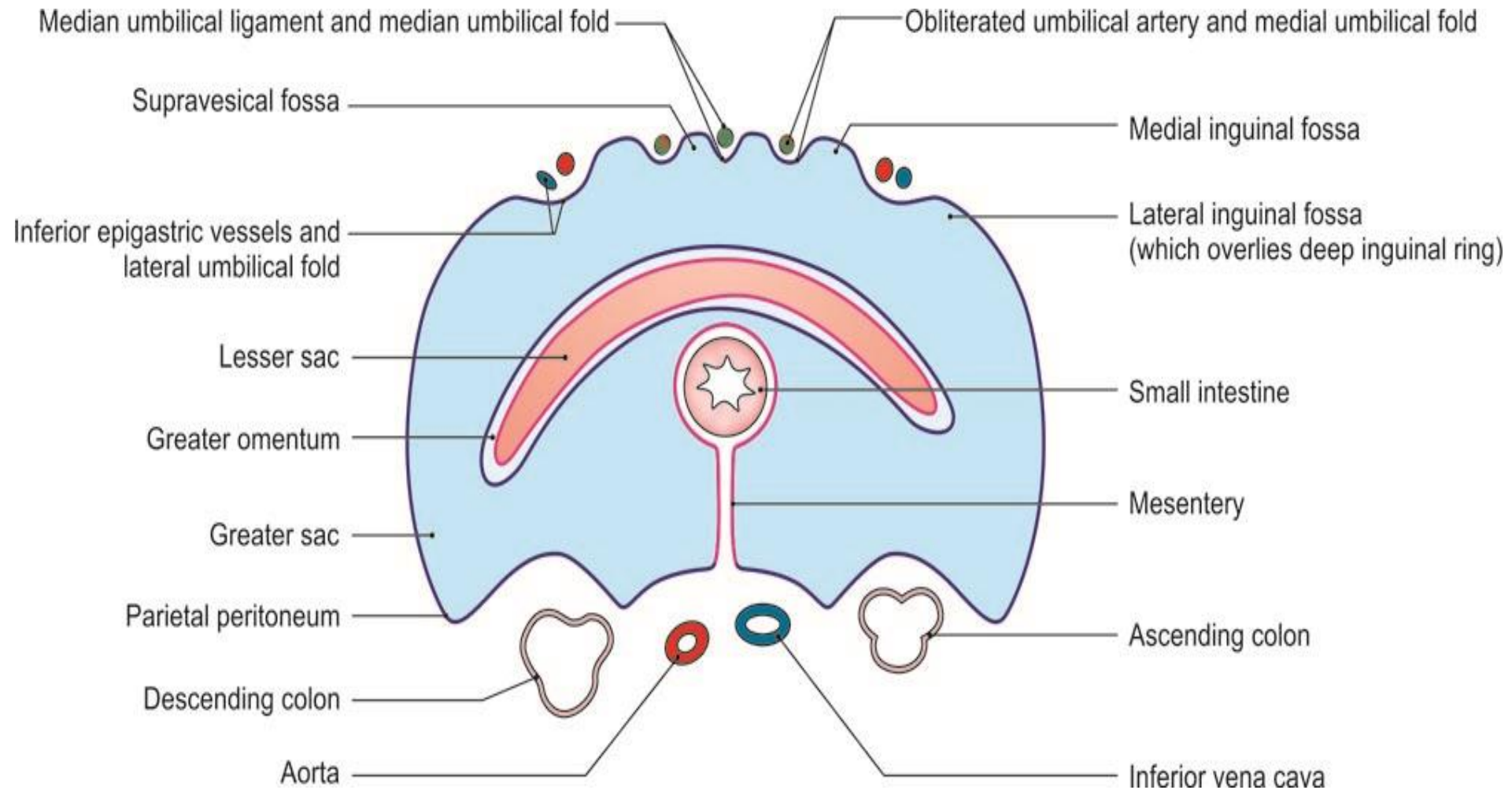
# Supracolic and Infracolic Compartments

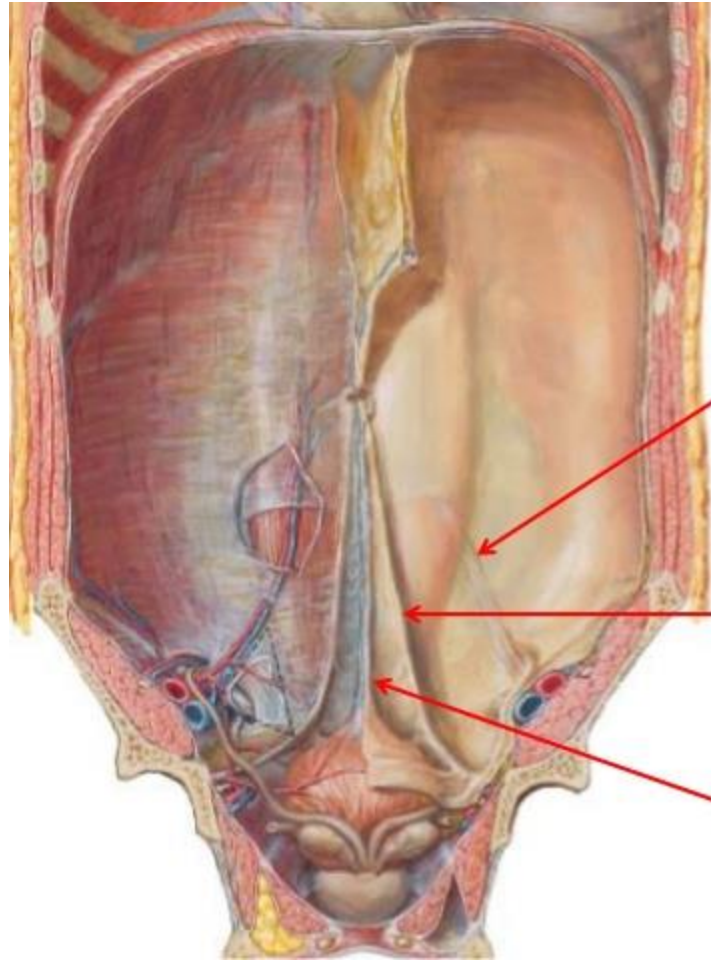


# Horizontal Tracing above the Level of the Transverse Colon (Supracolic compartment)



# Horizontal Tracing below the Level of the Transverse Colon (Infracolic compartment)





**Lateral Umbilical fold**

Inferior Epigastric Vessels

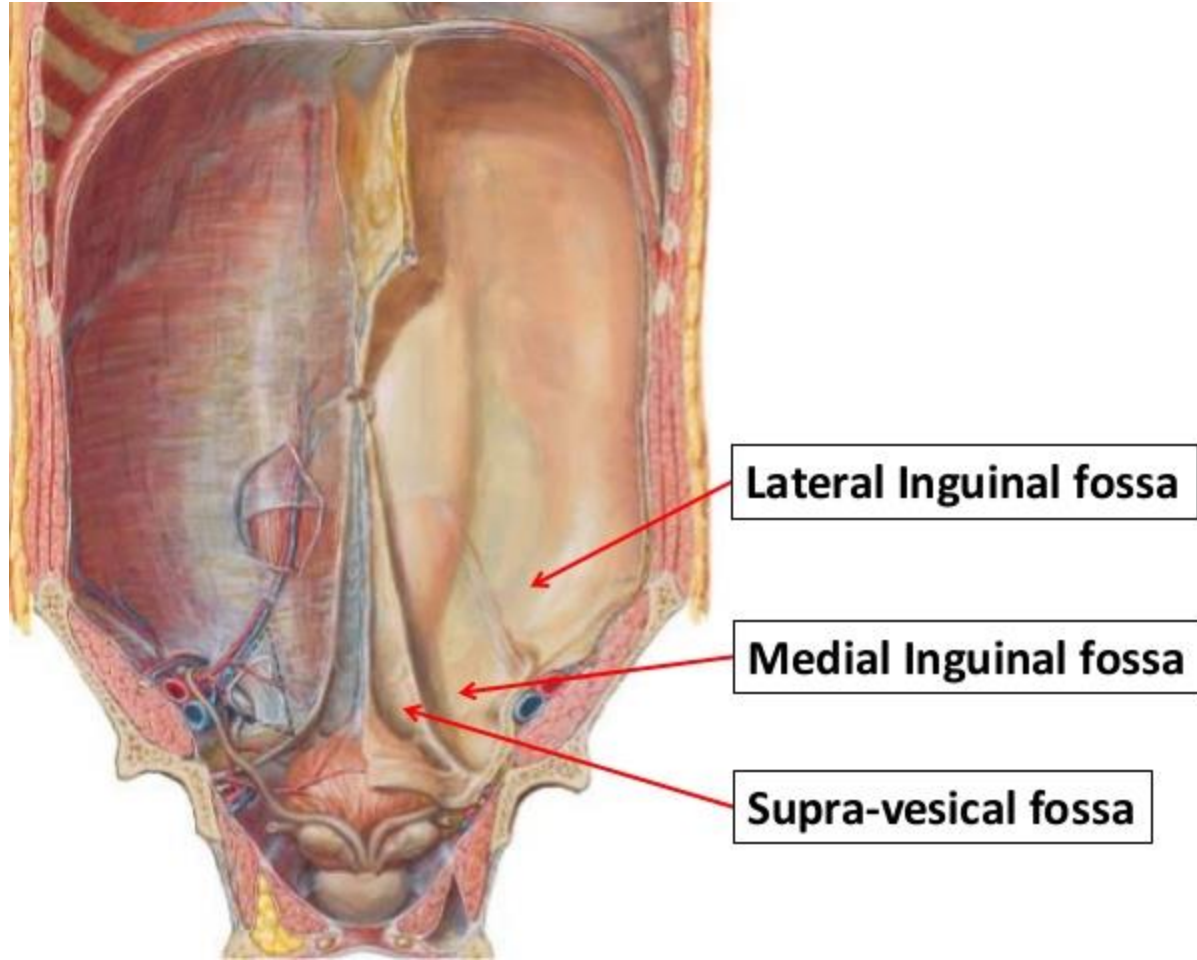
**Medial Umbilical fold**

Obliterated Umbilical a.

**Median Umbilical fold**

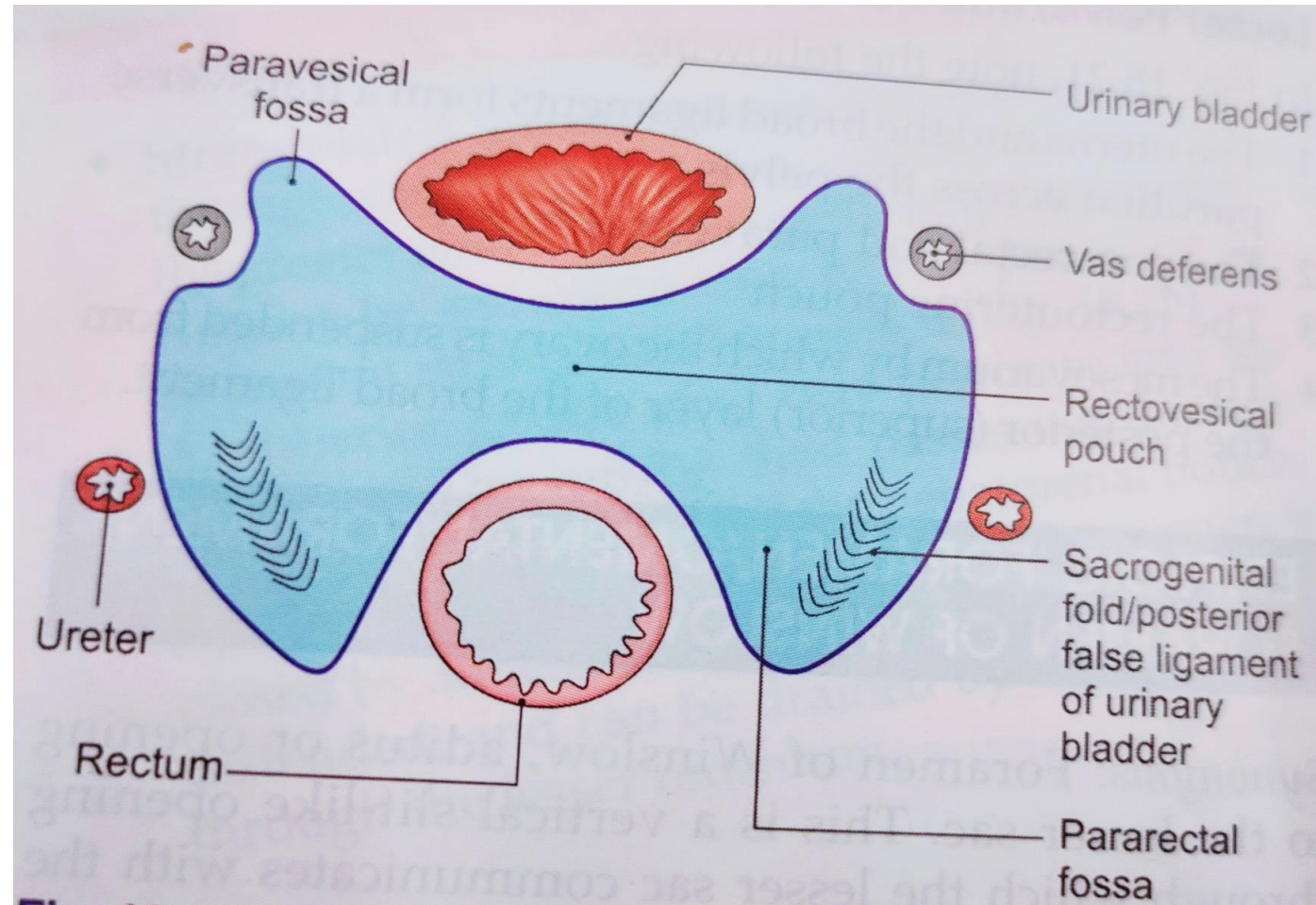
Median Umbilical Lig





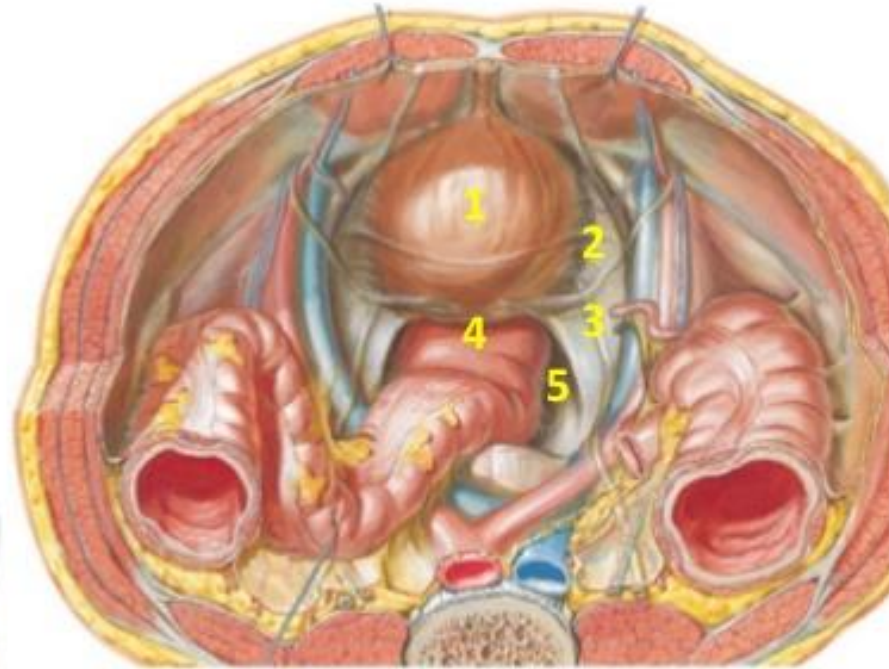
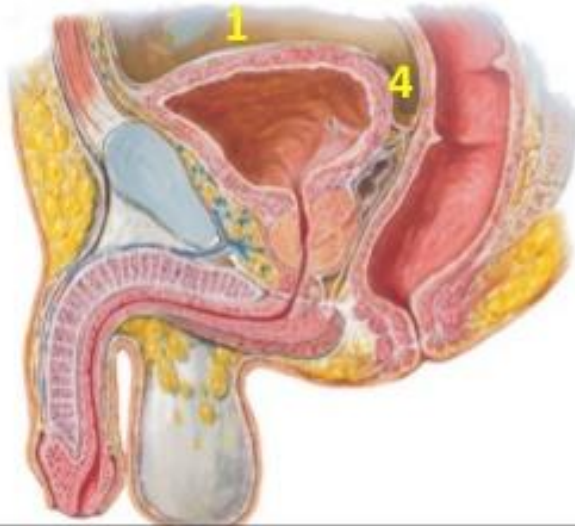


# Horizontal section through male pelvis showing horizontal disposition of peritoneum



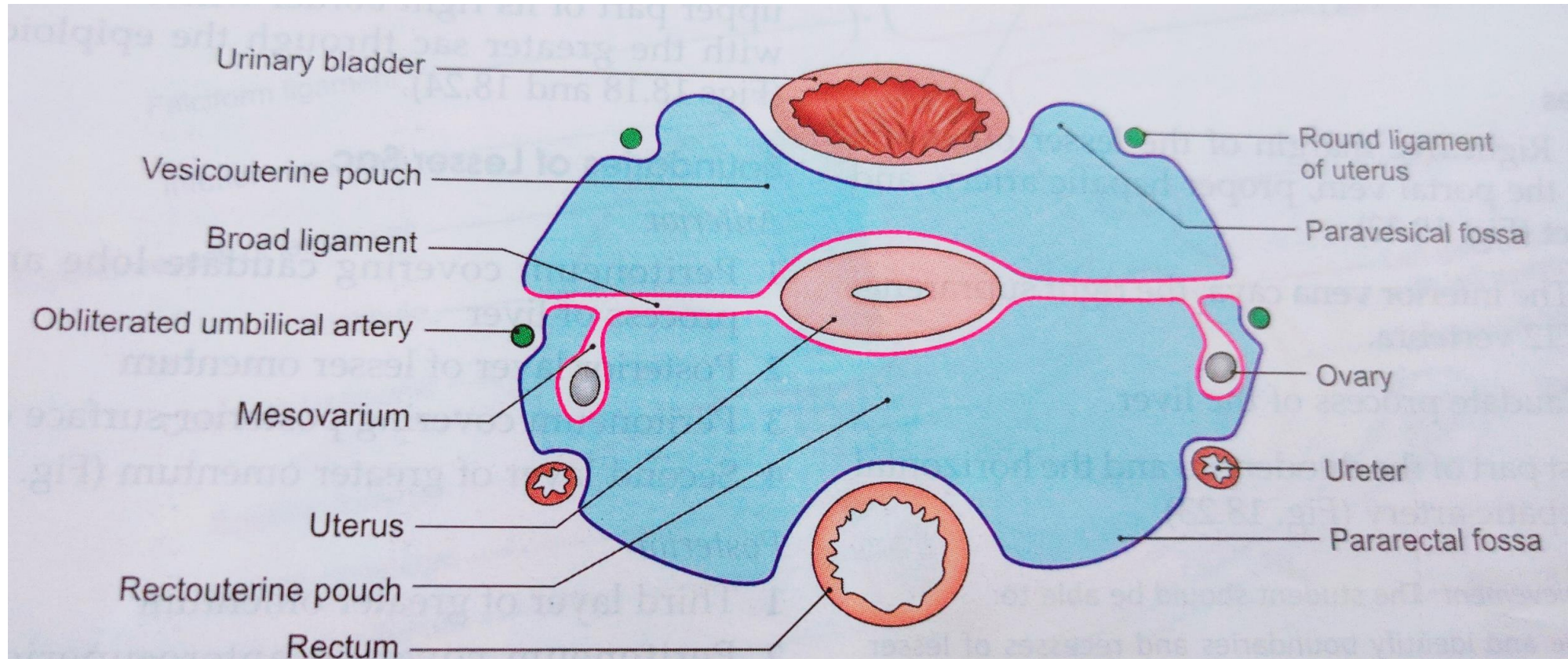
# Peritoneal reflections / male

- 1- supra-vesical fossa
- 2- para-vesical fossa
- 3- uretric fold
- 4- Recto-vesical pouch
- 5- para-rectal fossa



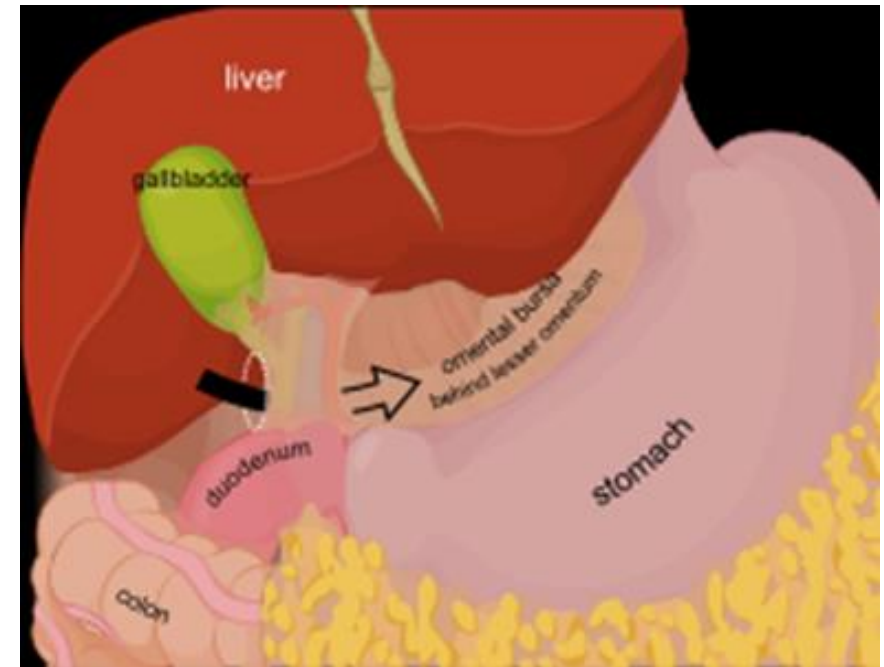


# Horizontal section through female pelvis showing horizontal disposition of peritoneum



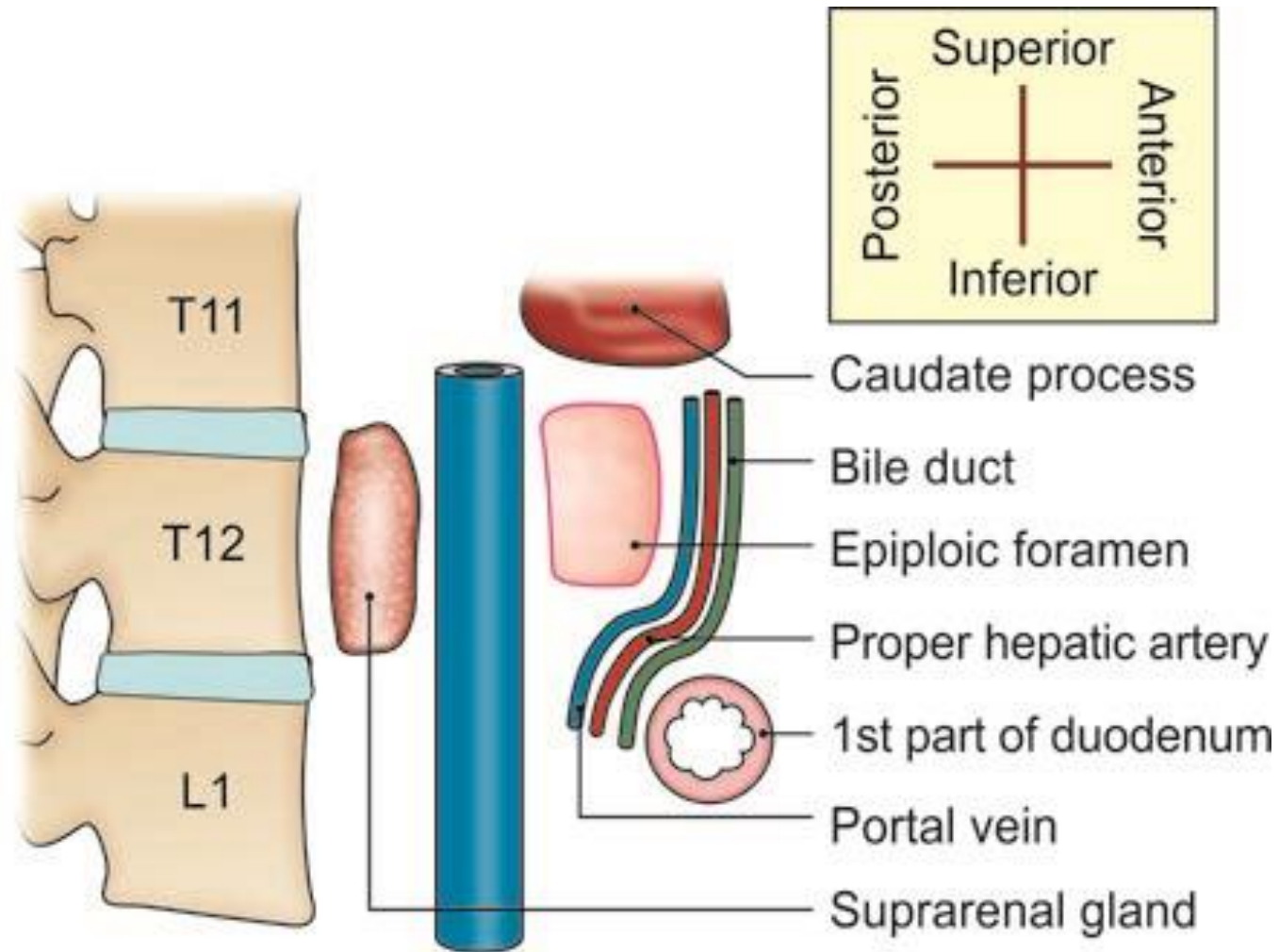
# Epiploic Foramen/Omental Foramen/Foramen of Winslow

- Vertical slit-like opening through which the lesser sac communicates with greater sac.
- The foramen is situated behind the right free margin of the lesser omentum at the level of the 12th thoracic vertebra.





# Boundaries of epiploic foramen



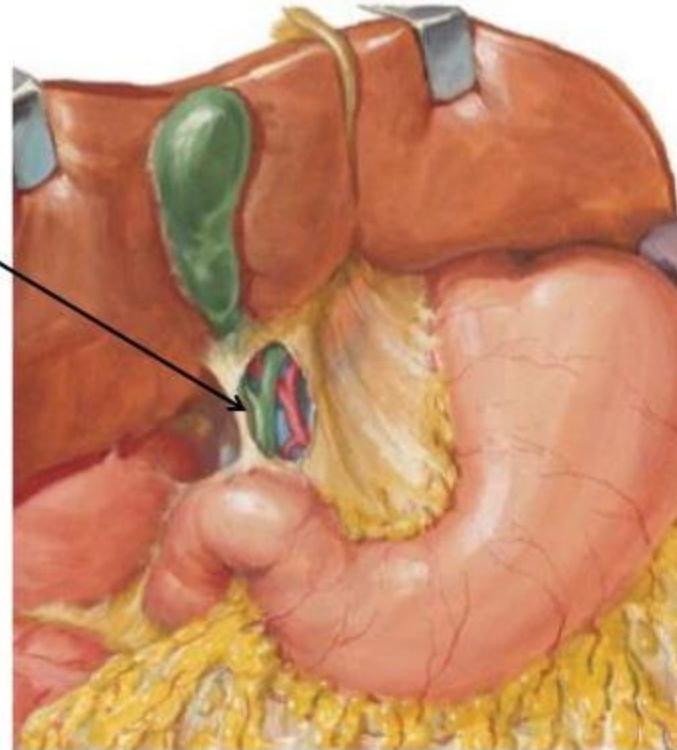
## Epiploic Foramen

## Boundaries

### Anteriorly:

Right free margin of lesser omentum

- Common bile duct
- Proper hepatic a.
- Hepatic portal v.
- Hepatic plexus of n.
- Lymphatics



## Epiploic Foramen

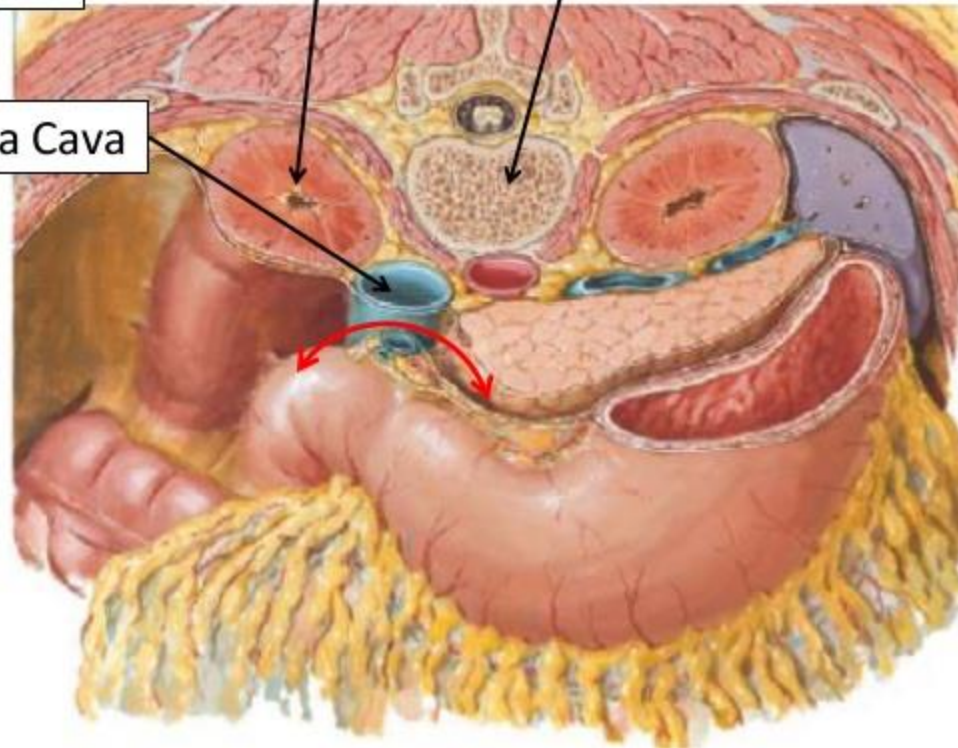
## Boundaries

**Posteriorly:**

Right kidney

T12

Inferior Vena Cava

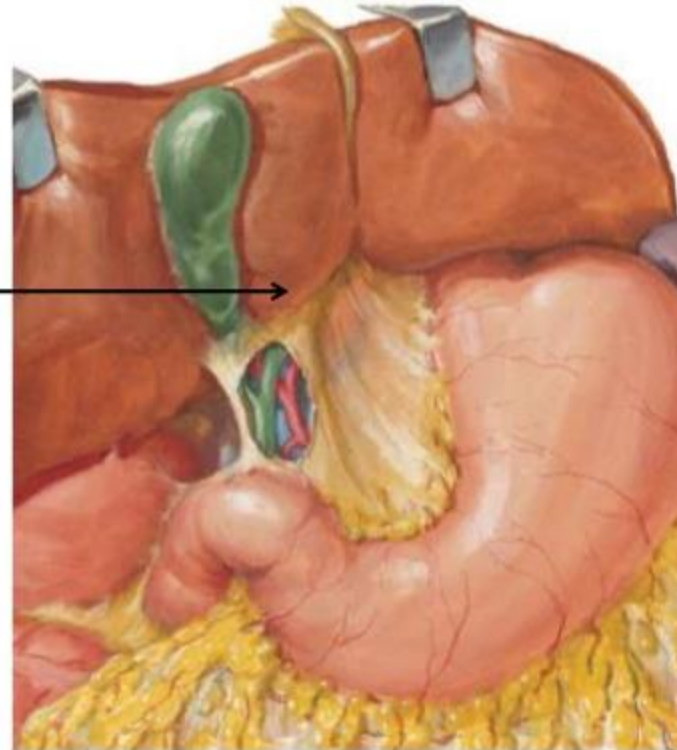


## Epiploric Foramen

## Boundaries

**Superiorly:**

Caudate Process of Liver





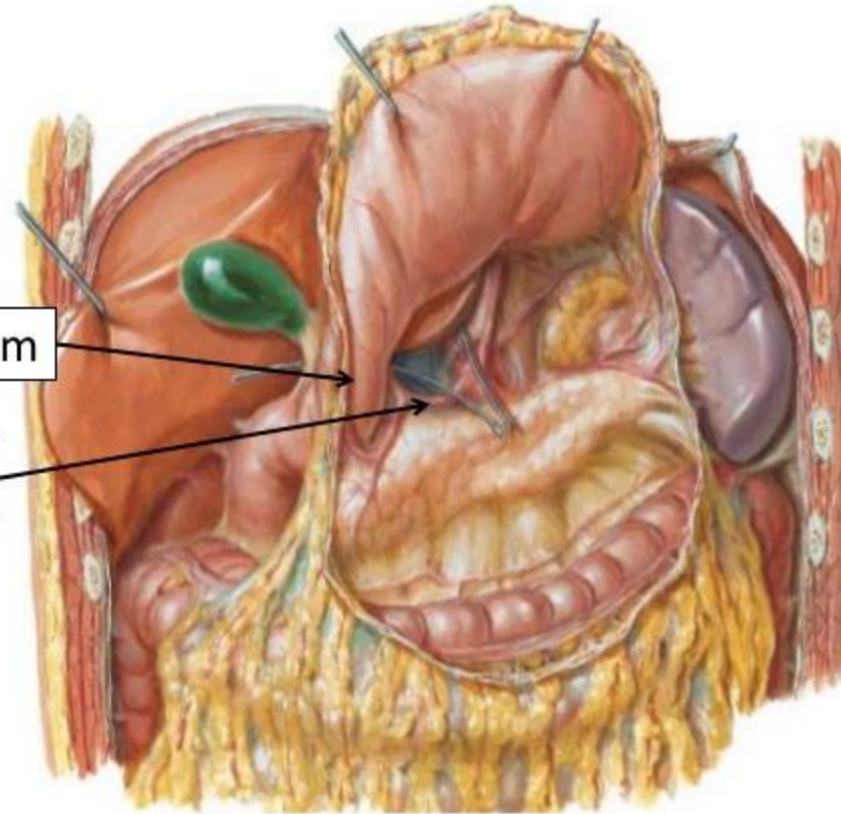
## Epiploic Foramen

## Boundaries

Inferiorly:

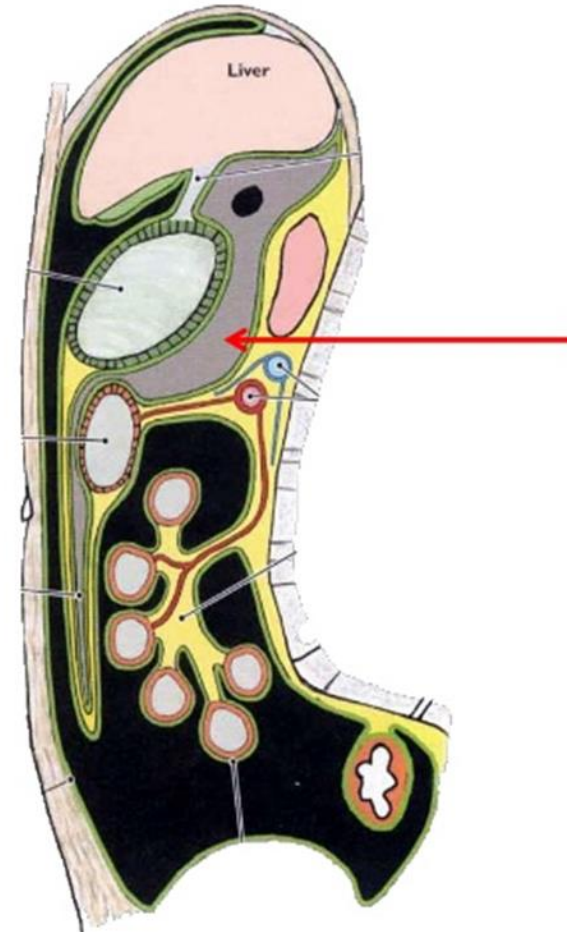
1<sup>st</sup> part of duodenum

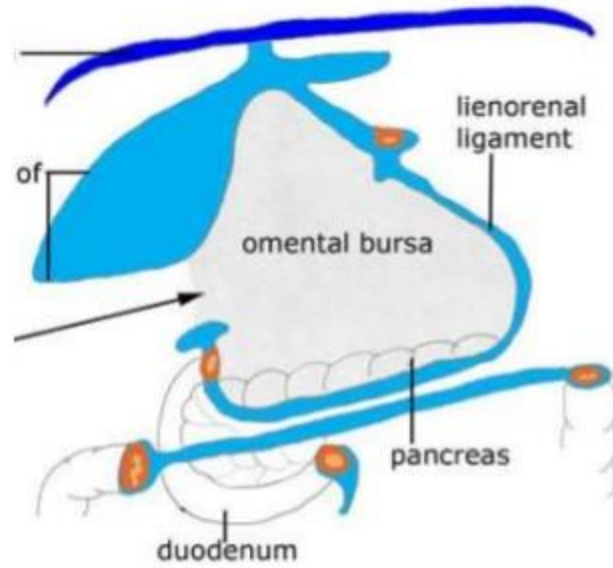
Hepatic artery



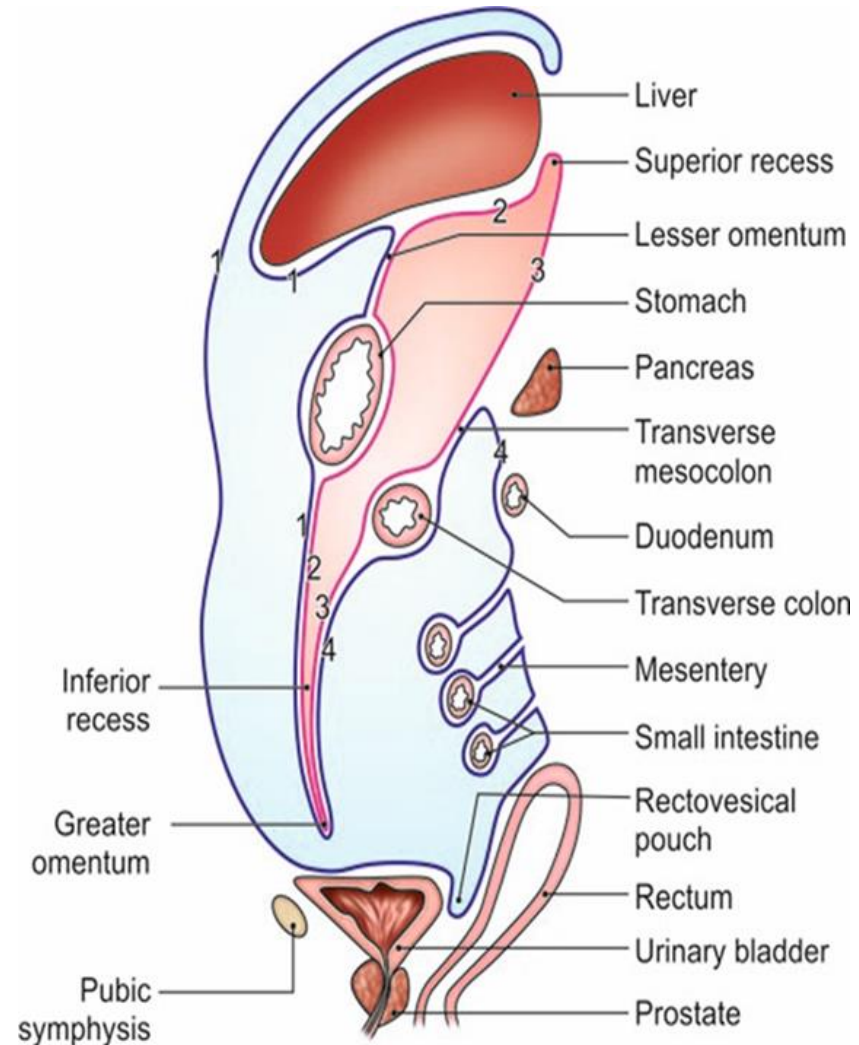
# LESSER SAC OR OMENTAL BURSA

- This is a large recess of the peritoneal cavity behind the stomach, the lesser omentum and the caudate lobe of the liver.
- It is closed all around, except in the upper part of its right border where it communicates with the greater sac through the epiploic foramen.
- Shape: hot water bag like





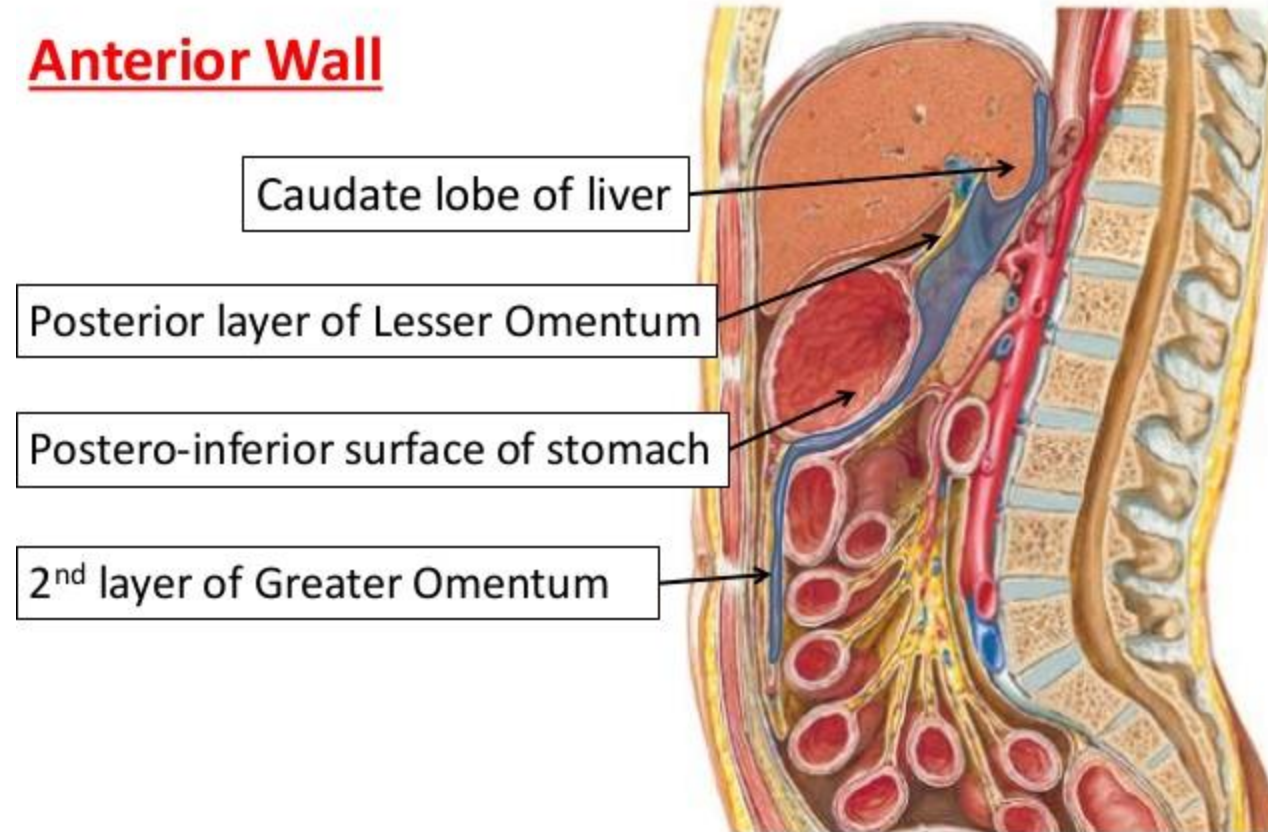
# Boundaries of lesser sac





## Lesser sac - Boundaries

### Anterior Wall



## Lesser sac - Boundaries

### Posterior Wall

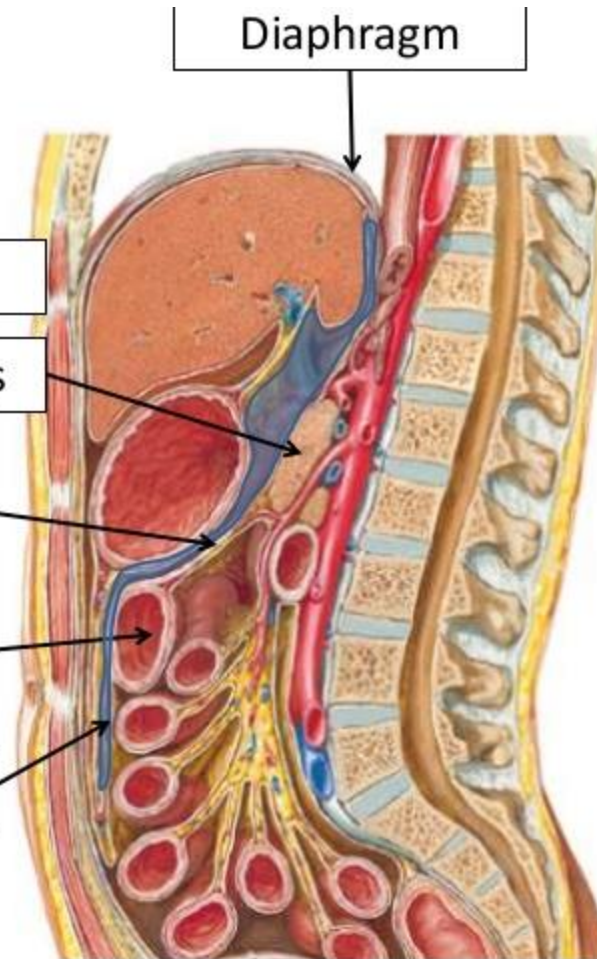
Left supra-renal gland, kidney

Ant surface of body of pancreas

Upper layer of transverse meso-colon

Antero-superior surface of transverse colon

3<sup>rd</sup> layer of Greater Omentum

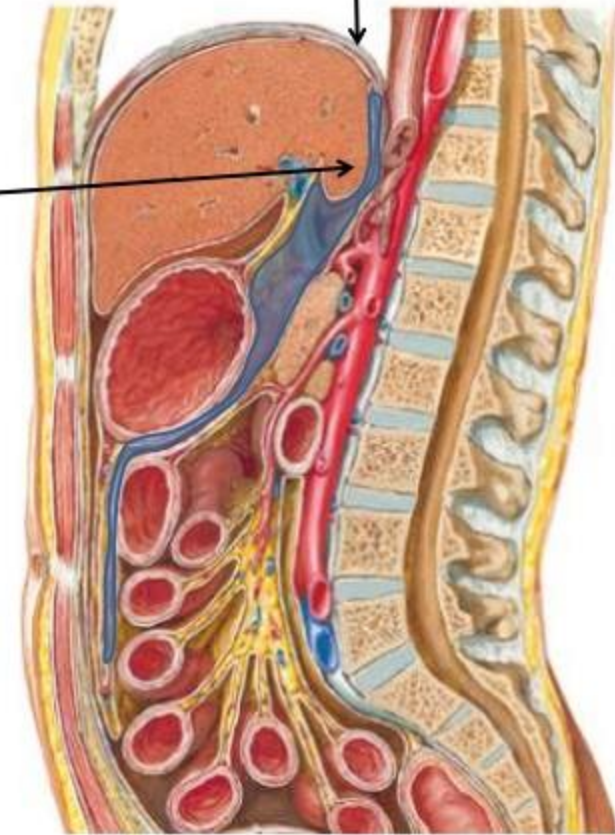


## Lesser sac - Boundaries

### Upper Margin

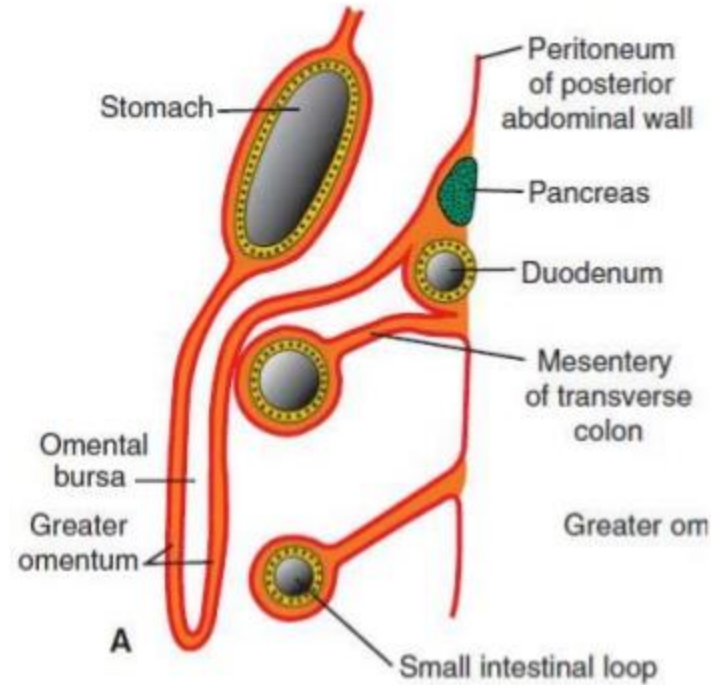
Caudate lobe of liver

Diaphragm

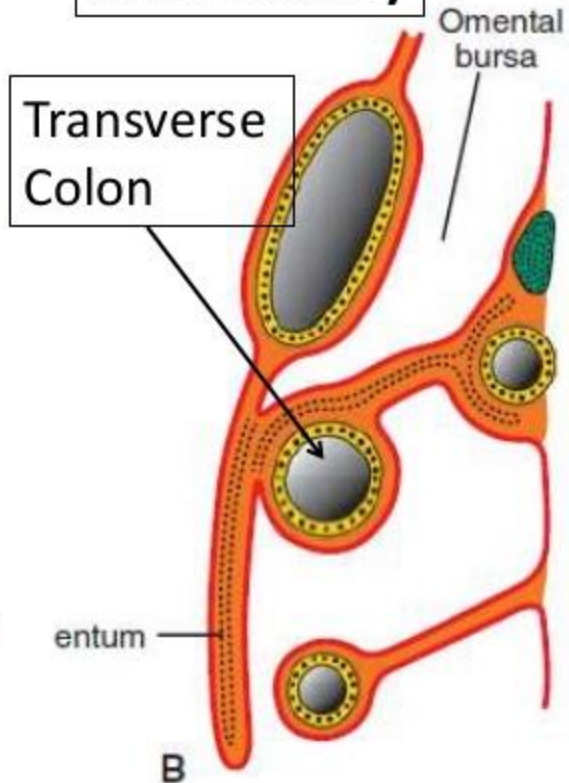


## Lower Margin

**Before Puberty**



**After Puberty**

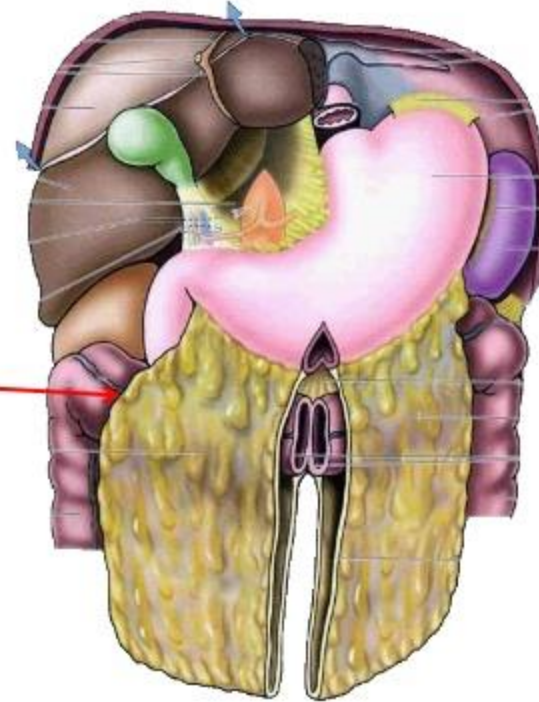




## Right Margin

Below Transverse Colon

Right free margin of  
Greater omentum

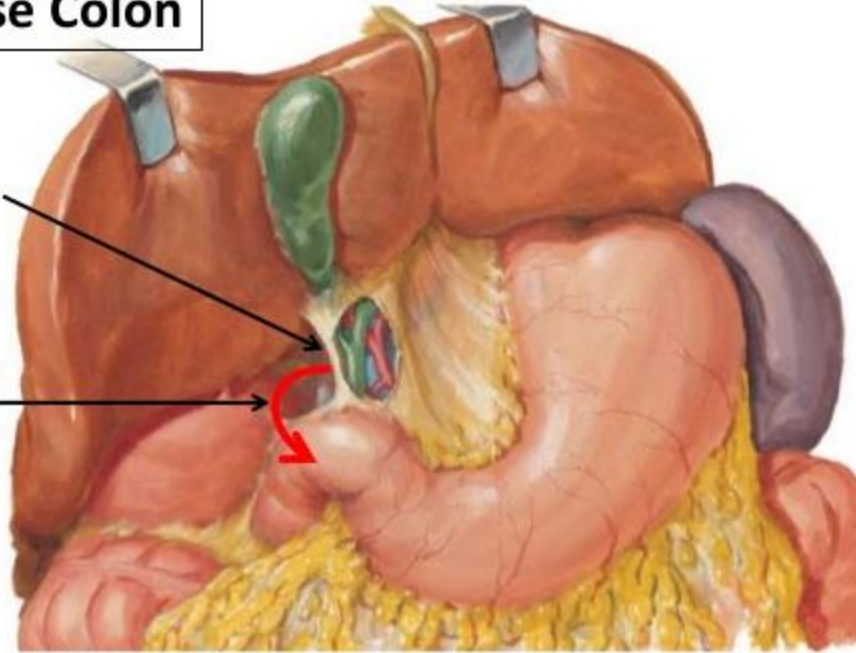


## Right Margin

Above Transverse Colon

Deficient

**Epiploic Foramen**



## Subdivision of Lesser Sac

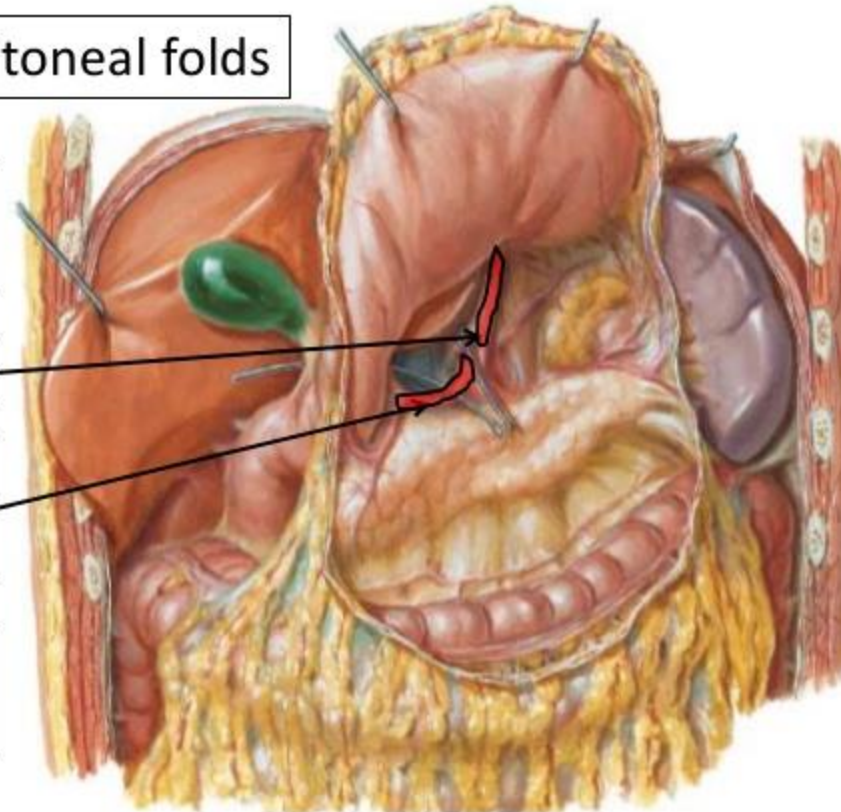
Divided by 2 peritoneal folds

**Left Gastro-pancreatic fold**

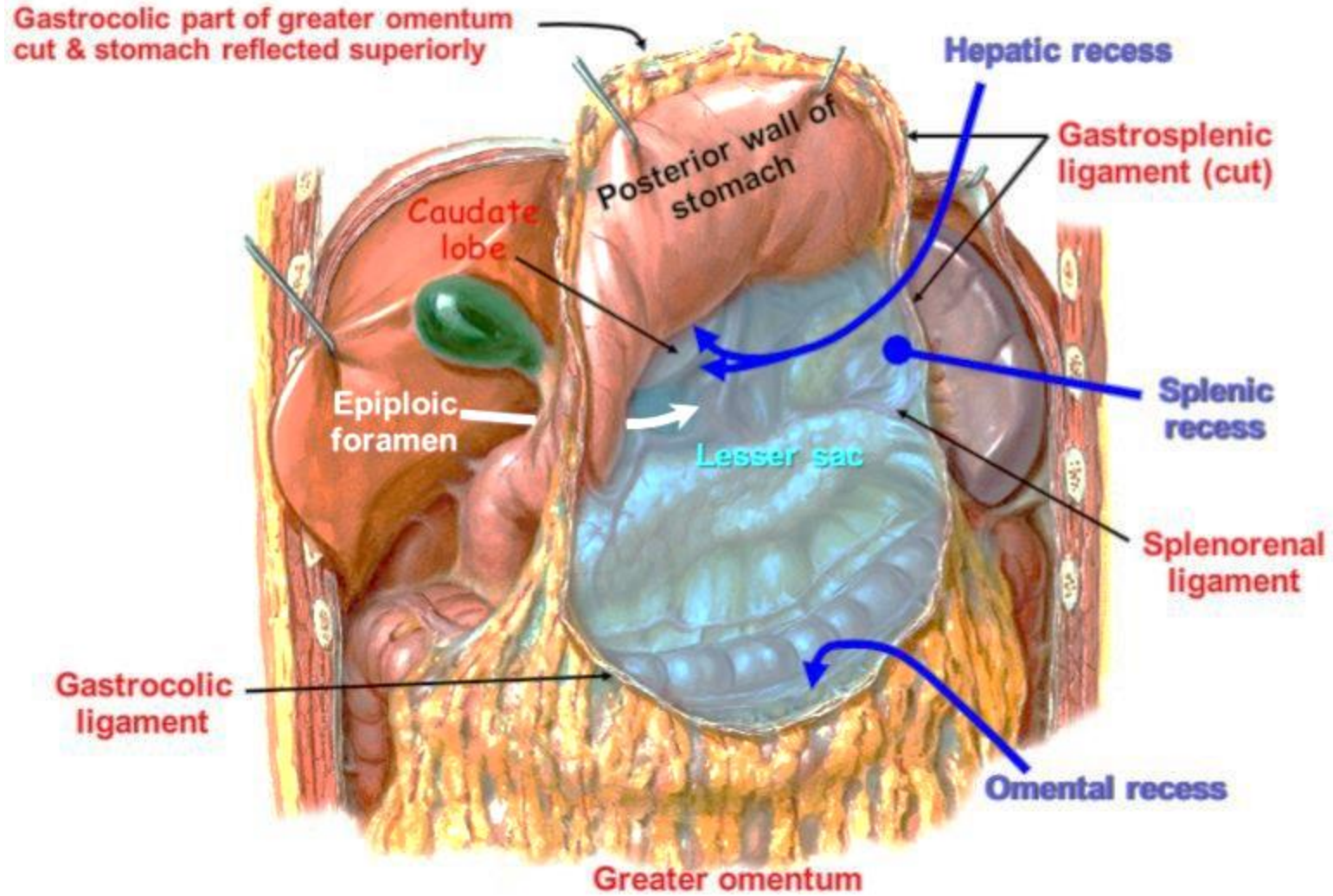
Left Gastric artery

Common Hepatic artery

**Right Gastro-pancreatic fold**

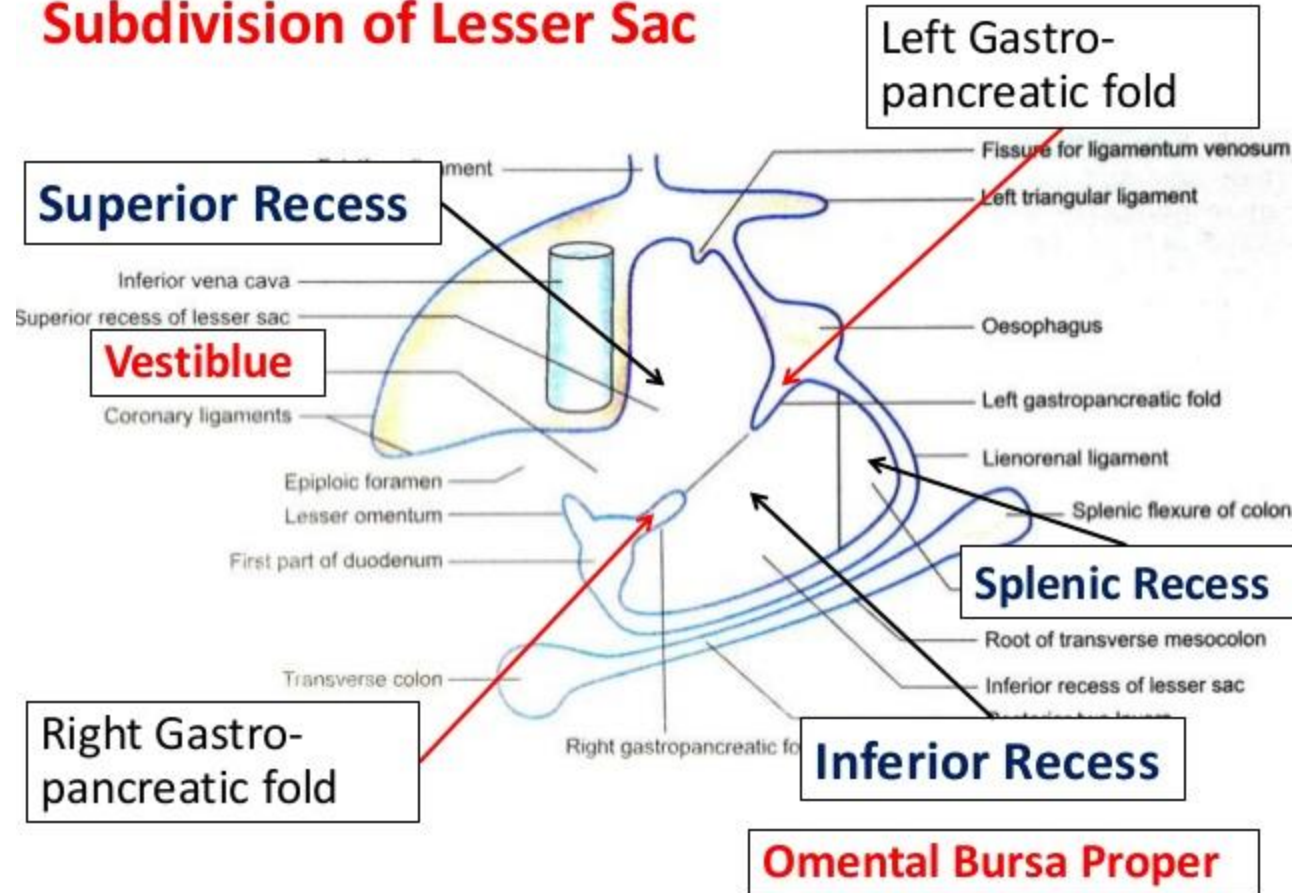


# Lesser Sac and Its Recesses

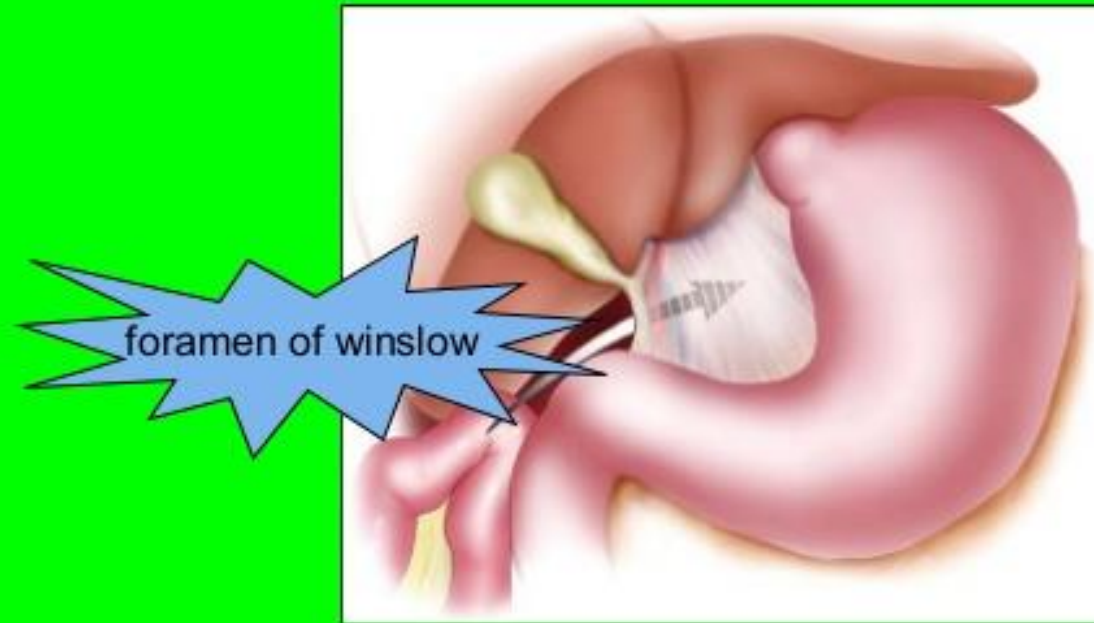




## Subdivision of Lesser Sac



# Lesser sac hernia



Review of Internal Hernias: Radiographic and Clinical Findings: Lucie C. Martin, Elmar M. Merkle, William M. Thompson, Martin LC, Merkle EM, Thompson. AJR 2006; 186:703-717

**THANKYOU**